



# ON THE ROAD

A collection of contemporary fabrics  
inspired by nature

# ON THE ROAD

Curated designs. Exceptional performance.

On The Road is a collection of over 90 references exploring the theme of nature through its diverse landscapes and colours. The collection offers a wide range of sophisticated patterns that will make compositions more daring. An assortment of textured fabrics and jacquards for infinite design possibilities.



EASY TO CLEAN



WATER & STAIN RESISTANT



UV/FADE RESISTANT



MOLD/MILDEW RESISTANT



BLEACH CLEANABLE



BREATHABLE COMFORT

	STANDARDS	CARAT	KHAIMA	LOPI	SAVANE	TERRITORY	TUNDRA	WADI	WANDER	YAMA	SLING		
											Augustine	Logan	Sailing
COMPOSITION													
Sunbrella acrylic		100%	100%	100%	100%	100%	100%	100%	100%	100%	11%	19%	35%
Sunbrella polyester		-	-	-	-	-	-	-	-	-	25%	22%	17,8%
Sunbrella PVC		-	-	-	-	-	-	-	-	-	64%	59%	47,2%
FINISH		Non PFAS, Water-Repellent & Stain-Proof									Non PFAS		
MINIMUM USEFUL WIDTH	EN 1773	140	140	140	140	140	140	140	140	140	137		
WEIGHT	ISO 3801 g/sqm	420	500	680	430	710	435	450	470	545	505	480	580
ROLL LENGTH	LM	40	30	25	40	25	35	35	35	30	40		
SPRAY TEST	ISO 4920 Class/5	5	5	4	5	5	4	5	5	5	-		
COLOUR FASTNESS UV INDOOR	ISO 105 B02 Class/8	8									8		
COLOUR FASTNESS TO WEATHER OUTDOOR	ISO 105 B04 1000 h Class/5	4-5									4-5		
FLAME RETARDANCY		All these fabrics pass the following certifications: BS 5852-1 source 0, Cal 117, NFPA 260, EN 1021-1 (cigarette test)											
CARE INSTRUCTIONS		 Ironing reinforces the treatment											

All the values have a +/-5% tolerance

\* Sling:



Also available on special order with a waterproof backing that brings a waterproofness >1500 mm according to the schmerber test. Special order of 200 lm minimum per construction (with a possibility of mixing up to 4 colours). Increases fabric weight by 100 g/m<sup>2</sup>.



Find more technical information with the digital data sheets !

# SUNBRELLA®

A BRAND THAT CARES ABOUT THE ENVIRONMENT

From production to use, Sunbrella® fabrics combine quality with durability to reduce their impact on the environment.



PRODUCT LIFECYCLE MANAGEMENT

As part of its Sunbrella ReCycled offer, Sunbrella created the Endless Stories collection containing up to 50% recycled solution-dyed acrylic fibres. Our recycled fibres are sourced directly from production plants where waste is divided into colour groups and turned back into fibres. These fibres are then blended with the "virgin" Sunbrella fibres.



ZERO LANDFILL

For over 30 years, Sunbrella has recycled its industrial waste such as yarn and packaging. Today, every Sunbrella manufacturing facility around the globe sends absolutely no waste to the landfill.



REACH REGULATION

Sunbrella has developed treatments designed and applied in strict compliance with European REACH regulations.

REACH is a European regulation designed to improve the protection of human health and the environment from the risks posed by chemicals, while enhancing the competitiveness of the EU chemicals industry.



LESS WASTE

Our quality Sunbrella fabrics do not rot or fade and are highly resistant over time. As our fabrics do not need to be replaced as often as traditional fabrics, they generate less waste.



5 YEAR WARRANTY

Sunbrella acrylic fabrics carry a 5-year limited warranty for indoor and outdoor applications against abrasion, pilling, loss of colour and strength in normal usage and exposure conditions. See general warranty conditions at : [dckc.fr/warranty](https://dckc.fr/warranty)



GREENGUARD CERTIFIED

Sunbrella upholstery fabric has achieved GREENGUARD GOLD Certification. Sunbrella upholstery fabrics are certified by GREENGUARD as contributing to healthy indoor air by being a very low emitting interior product.



LOW WATER CONSUMPTION

In the solution-dyeing process, colour pigments are added to the core of the fibre, to guarantee colourfastness and save water. Throughout our manufacturing process, we take steps to reduce the amount of water we use, notably by recycling washing water through the installation of water treatment plants.



PFAS FREE

Our company has invested significant resources to find alternatives to PFAS (perfluoroalkylate) chemicals and has developed an optimal non-PFAS finish for all Sunbrella upholstery fabrics. Our fabrics will retain their water repellency, durability, bright colours, appearance, softness, texture, ease of cleaning and strength.



OEKO-TEX LABEL

A quality that meets human-ecological requirements. Awarded with the OEKO-TEX label (class II - products with direct contact to the skin), Sunbrella fabrics are produced without hazardous substances and do not pose a threat to health, the skin or the environment.

\* Except for the Sling range

# WADI

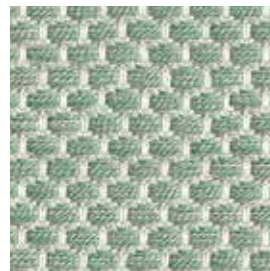
NEW



OPTIONAL FINISH\* :



SHIBORI  
WAD J633 140



TORTUGA  
WAD J627 140



RIVIERA  
WAD J628 140



SHRIMP  
WAD J631 140



SUGAR  
WAD J624 140



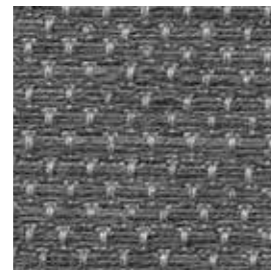
FOG  
WAD J625 140



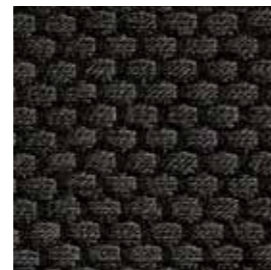
SOAP  
WAD J626 140



SESAME  
WAD J629 140



STEEL  
WAD J630 140



ECLIPSE  
WAD J632 140

# TUNDRA

NEW



ATLANTIS  
TUN3 J481 140



CEMENT  
TUN3 J485 140



WALL  
TUN3 J484 140



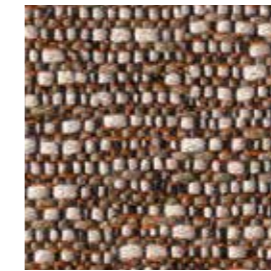
PENJA  
TUN3 J479 140



GORILLA  
TUN3 J476 140



MUESLI  
TUN3 J478 140



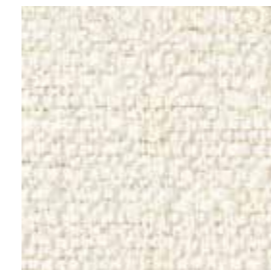
SOUK  
TUN3 J474 140



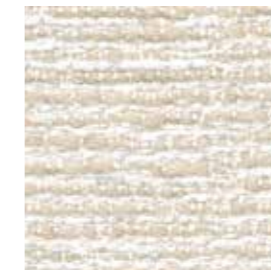
BARK  
TUN3 J475 140



ABYSS  
TUN3 J477 140



SWAN  
TUN3 J483 140



VARADERO  
TUN3 J482 140



GYPSUM  
TUN3 J486 140



RYE  
TUN3 J480 140

# YAMA

NEW



SCALE/ECHELLE: 1/7 - PATTERN SIZE/TAILLE MOTIF: W/L 64 CM X H 62.2 CM

SELVEDGES : <-->



**TOMORI**  
YAM J641 140



**ERABLE**  
YAM J640 140



**FUJI**  
YAM J642 140



**TANADA**  
YAM J639 140

# WANDER

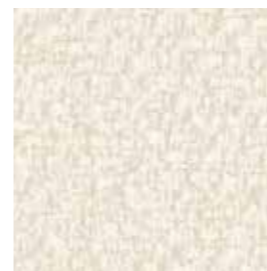
NEW



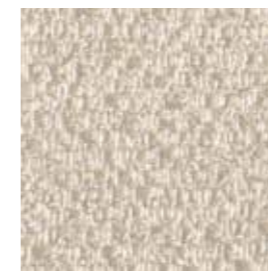
OPTIONAL FINISH\* :



**GOBI**  
WAN J622 140



**EVEREST**  
WAN J623 140



**PILAT**  
WAN J621 140



**GRANITE**  
WAN J618 140



**WOLF**  
WAN J617 140



**MANIOC**  
WAN J620 140



**BISON**  
WAN J619 140



**ETNA**  
WAN J616 140

# KHAIMA

NEW



SCALE/ECHELLE: 1/6 - PATTERN SIZE/TAILLE MOTIF: W/L 26,8 CM X H 20,2 CM

SSELVAGES :



MORINGA  
KHA J498 140



FONIO  
KHA J497 140



KALAHARI  
KHA J499 140

# SAVANE



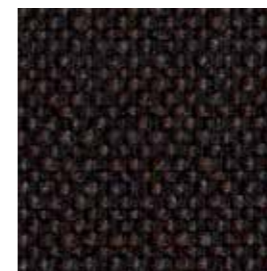
LAKE  
SAV3 J447 140

NEW



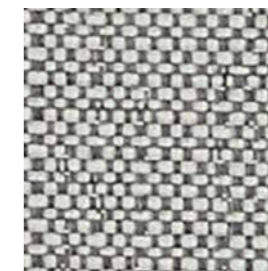
SWAMP  
SAV3 J449 140

NEW



PEAT  
SAV3 J448 140

NEW



NIMBUS  
SAV3 J350 140



WHITE  
SAV3 J235 140



CHAMELEON  
SAV3 J451 140

NEW

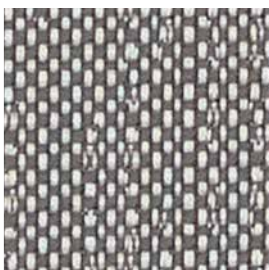


CROW  
SAV3 J446 140

NEW



GREY  
SAV3 J234 140



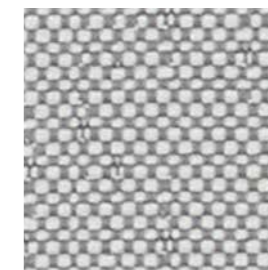
ZINC  
SAV3 J236 140



COCONUT  
SAV3 J233 140



TORNADO  
SAV3 J351 140



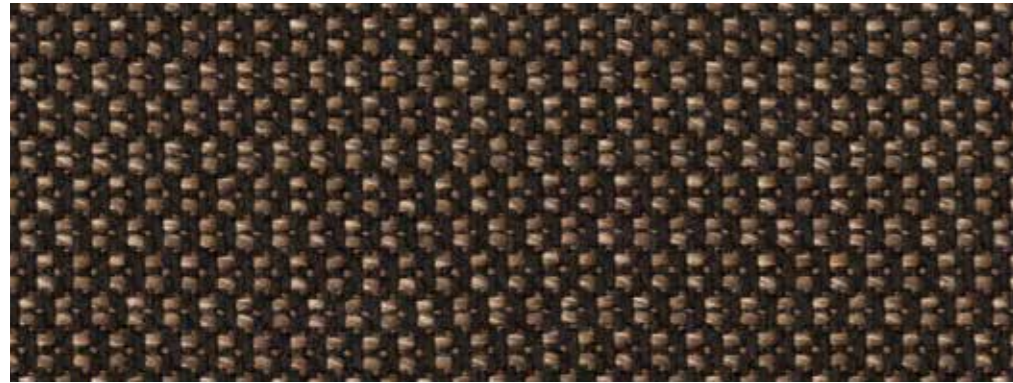
WHISPER  
SAV3 J349 140



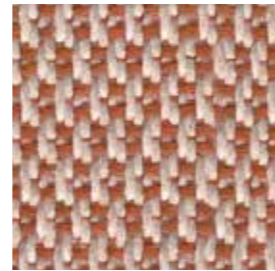
METEOR  
SAV3 J450 140

NEW

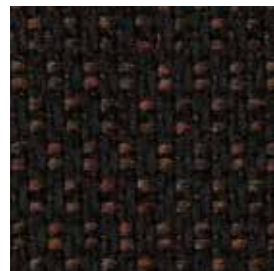
# LOPI



VIPER  
LOP2 R085 140 **NEW**



FAWN  
LOP2 R081 140 **NEW**



COFFEE  
LOP2 R078 140 **NEW**



PEPPER  
LOP2 R082 140 **NEW**



FOSSIL  
LOP2 R086 140 **NEW**



SNOW  
LOP2 R033 140



BARIBAL  
LOP2 R084 140 **NEW**



CHARCOAL  
LOP2 R017 140



CHAI  
LOP2 R080 140 **NEW**



MARBLE  
LOP2 R018 140



FRISON  
LOP2 R083 140 **NEW**



SHADOW  
LOP2 R013 140

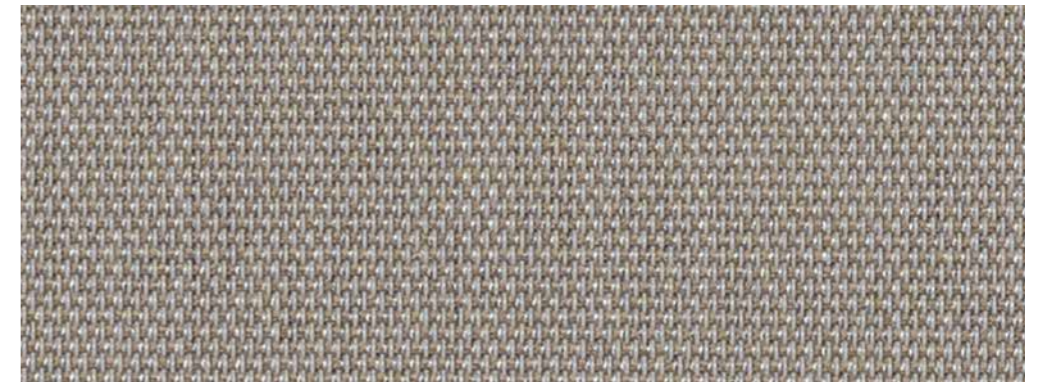


SAND  
LOP2 R019 140

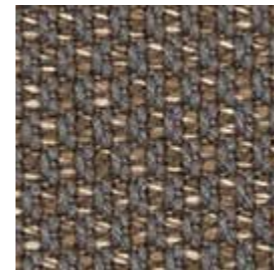


ANTIQUÉ  
LOP2 R034 140

# SLING



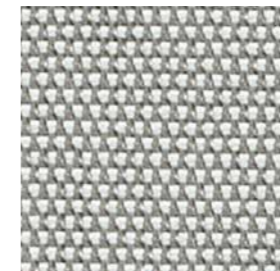
SAILING SPACE  
SLI 50143 19 137



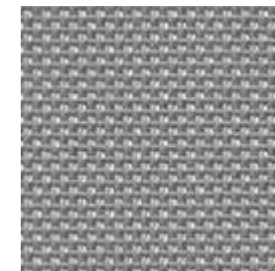
COCONUT  
LOP2 R014 140



ASH  
LOP2 R043 140



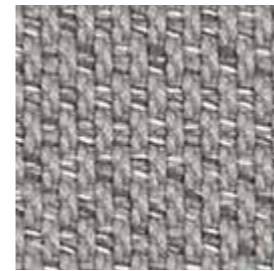
SAILING SEAGULL  
SLI 50143 10 137



AUGUSTINE SILVER  
SLI 5928 44 137



LOGAN GRAPHITE  
SLI 50045 18 137



SILVER  
LOP2 R015 140



LOGAN SNOWY  
SLI 50045 07 137



LOGAN SAND  
SLI 50045 06 137



LOGAN TAUPE  
SLI 50045 02 137



BUD  
LOP2 R079 140 **NEW**

# TERRITORY

NEW



**TURMERIC**  
TER J644 140



**TURMERIC**  
TER J644 140

SCALE/ECHELLE: 1/7 - PATTERN SIZE/TAILLE MOTIF: W/L 57.4 CM X H 51.1 CM

SELVEDGES : <math>\leftarrow\rightarrow</math>



**OXYDE**  
TER J646 140



**LAZULI**  
TER J645 140



**TIN**  
TER J647 140



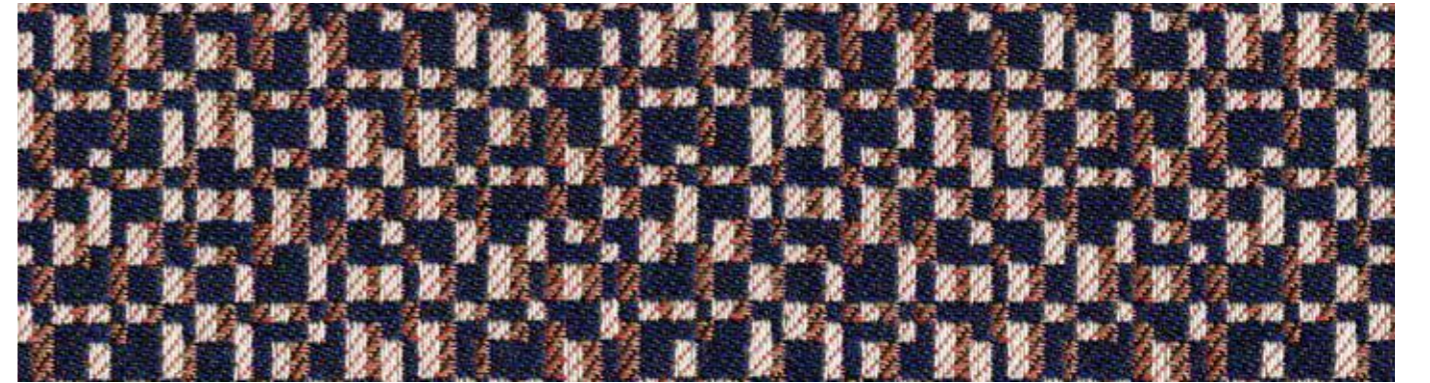
**ALUM**  
TER J643 140



CARAT ONYX J636

# CARAT

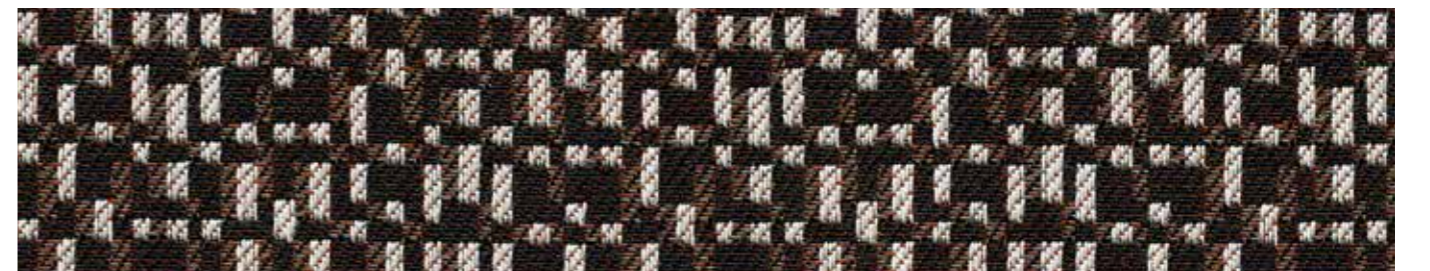
NEW



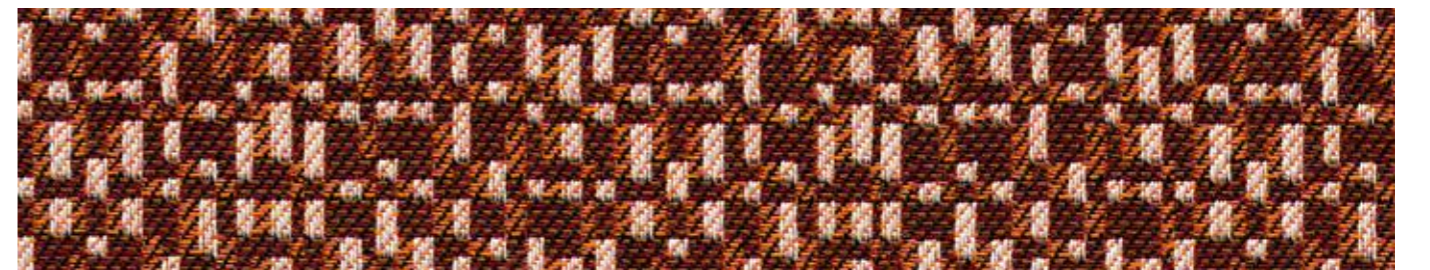
**AZURITE**  
CARA J635 140

SCALE/ECHELLE: 1/3 - PATTERN SIZE/TAILLE MOTIF: W/L 7.7 CM X H 8.1 CM

SELVEDGES : ↔



**ONYX**  
CARA J636 140



**GRENAT**  
CARA J637 140

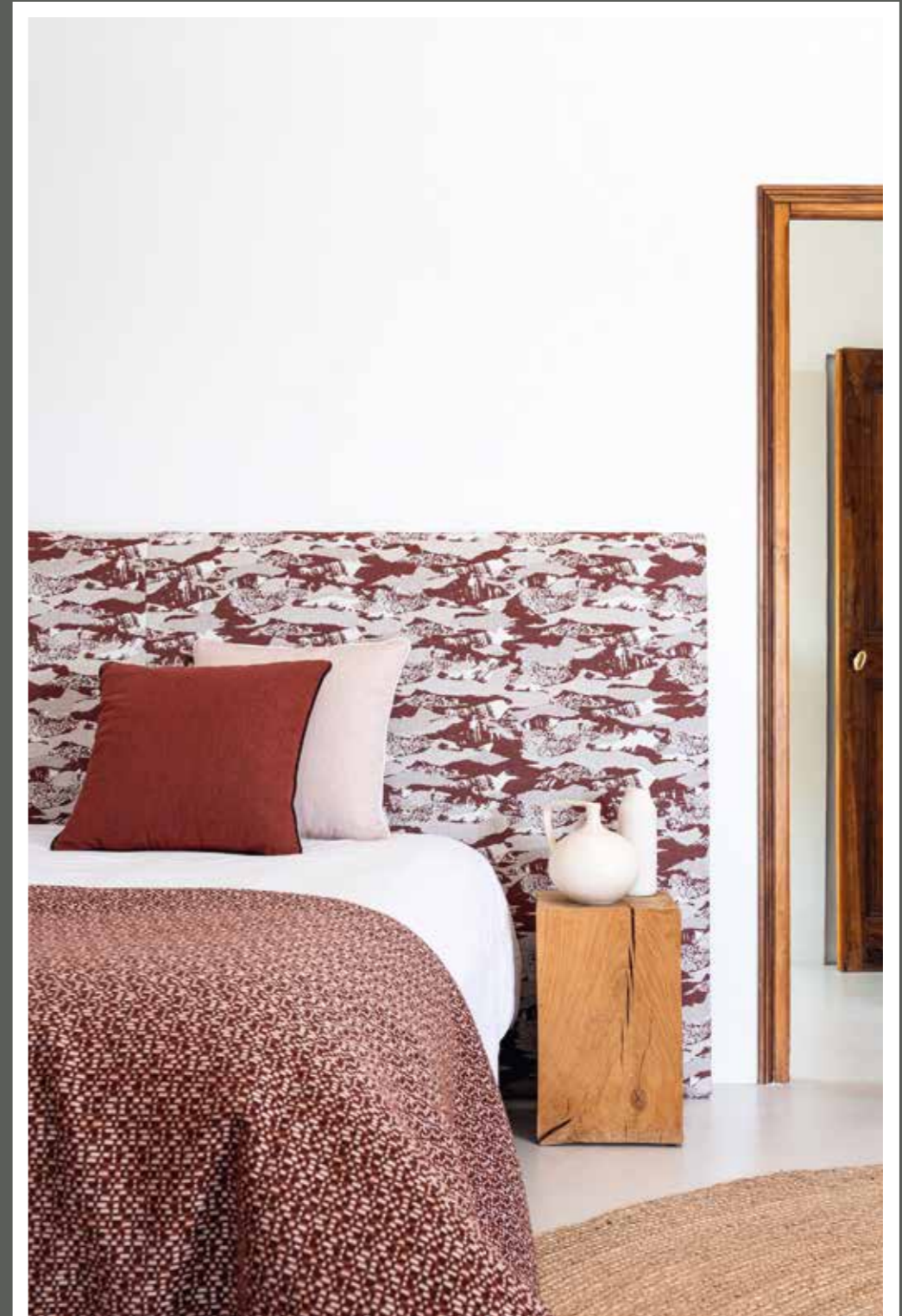


**AGATE**  
CARA J638 140





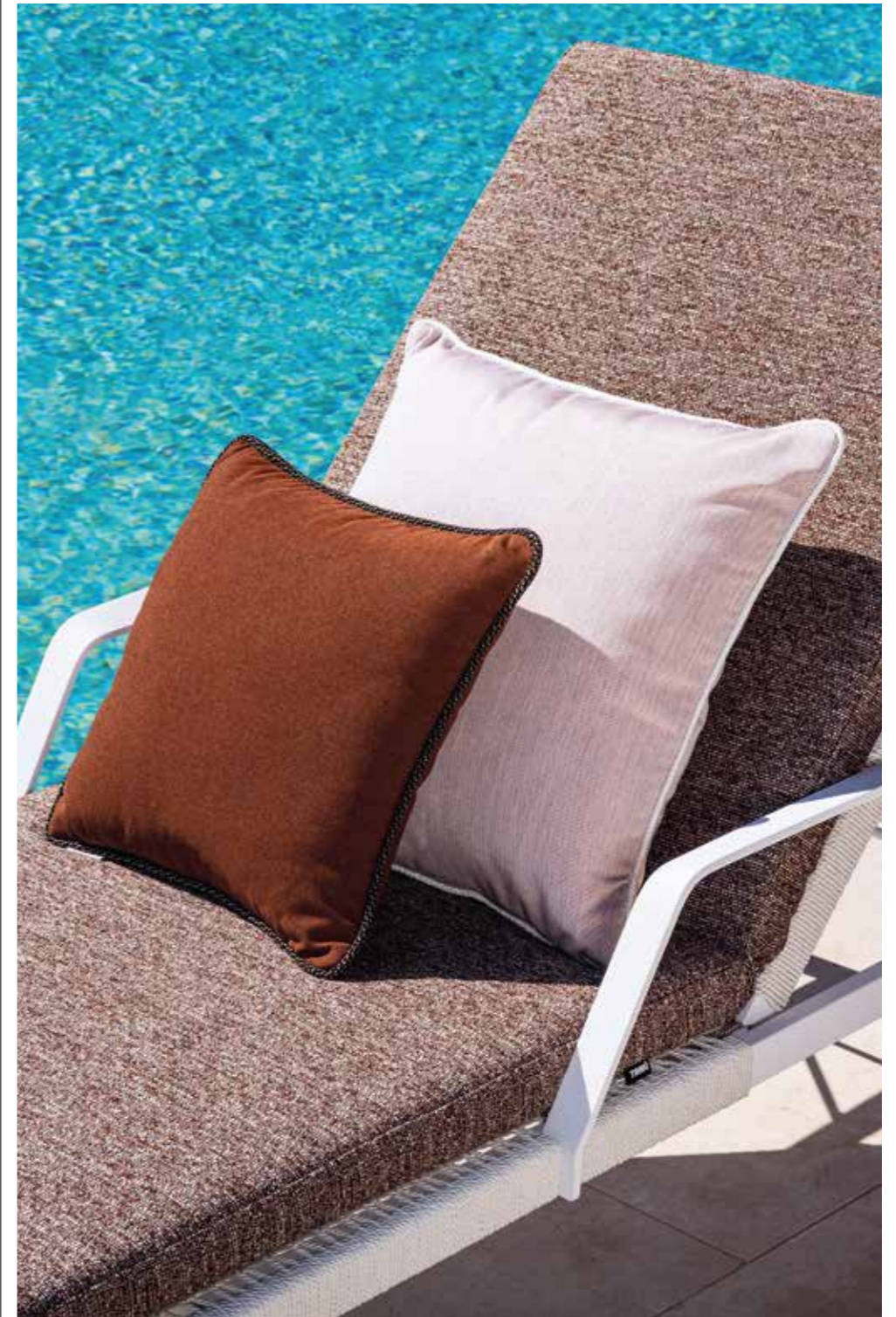
YAMA ERABLE J640



FROM TOP TO BOTTOM AND LEFT TO RIGHT: YAMA ERABLE J640, SOLID BLUSH 3965, SOLID AUTUMN 3982, CARAT GRENAT J637



WANDER MANIOC J620



FROM LEFT TO RIGHT: SOLID WALNUT 3996, SOLID BLUSH 3965, TUNDRA SOUK J474



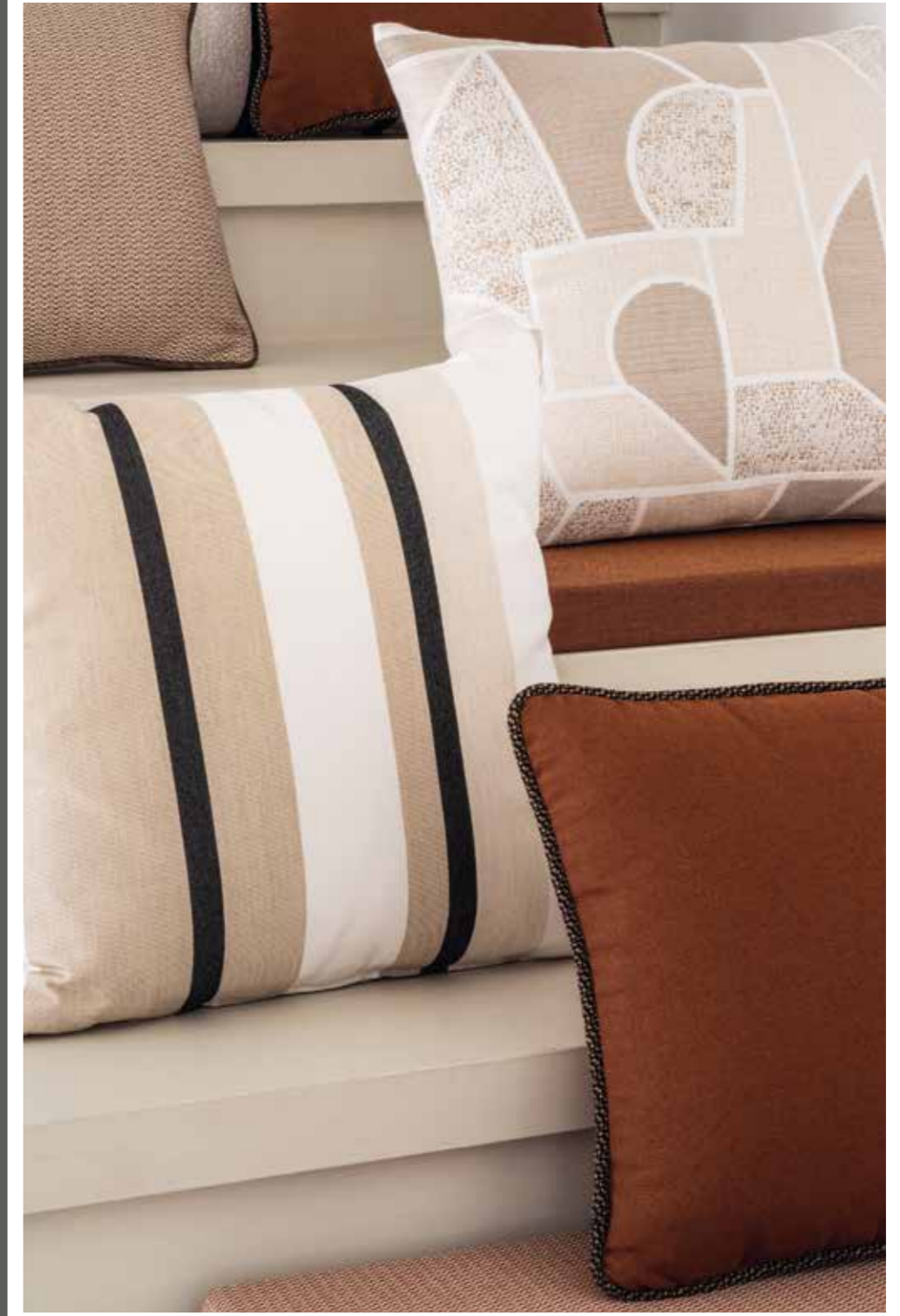
FROM LEFT TO RIGHT: WANDER EVEREST J623, TERRITORY ALUM J643, TUNDRA RYE J480, HARVEST KAOLIN 19201



FROM LEFT TO RIGHT: WANDER EVEREST J623, TUNDRA RYE J480



LOPI FAWN R081



FROM LEFT TO RIGHT AND TOP TO BOTTOM: LOPI CHAI R080, TERRITORY ALUM J643, STRIPE CANYON VERDON 4002, SOLID WALNUT 3996



FROM LEFT TO RIGHT AND TOP TO BOTTOM: SAVANE LAKE J447, YAMA TANADA J639, SOLID CALATHEA 3999, SLOW SPIREA 19107



FROM LEFT TO RIGHT AND TOP TO BOTTOM: SAVANE COCONUT J232, SOURCE SENCHA 19005, TERRITORY ALUM J643, LOPI PEPPER R082



[dckc.fr/sunbrella](https://dckc.fr/sunbrella) 

